

# ACI Racing Weekend Imola, 1-2 Giugno 2024

## Italian F4 Championship - Results Qualifying 2

Imola Circuit 4.909 m

1 / 2

No.	Driver	Nat	Entrant	Team	Car	Class	Time	Gap	Rel.	Laps
1	<b>6 YAMAKOSHI</b> Hiyu	JPN	Van Amersfoort Racing	Van Amersfoort Racing	Tatuus F4-T421		<b>1'44.831</b>			6
2	<b>45 BEETON</b> Jack	AUS	US Racing	US Racing	Tatuus F4-T421		<b>1'45.177</b>	0.346	0.346	7
3	<b>31 BOHRA</b> Akshay	USA	US Racing	US Racing	Tatuus F4-T421		<b>1'45.184</b>	0.353	0.007	8
4	<b>80 POWELL</b> Alex	USA	Prema Racing	Prema Racing	Tatuus F4-T421	R	<b>1'45.195</b>	0.364	0.011	7
5	<b>27 SLATER</b> Freddie	GBR	Prema Racing	Prema Racing	Tatuus F4-T421		<b>1'45.212</b>	0.381	0.017	7
6	<b>12 PRADEL</b> Gianmarco	AUS	US Racing	US Racing	Tatuus F4-T421		<b>1'45.267</b>	0.436	0.055	8
7	<b>50 GOWDA</b> Dion	IND	Prema Racing	Prema Racing	Tatuus F4-T421		<b>1'45.274</b>	0.443	0.007	8
8	<b>51 NAKAMURA-BERTA</b> Kean	JPN	Prema Racing	Prema Racing	Tatuus F4-T421	R	<b>1'45.305</b>	0.474	0.031	8
9	<b>33 STOLCERMANIS</b> Tomass	LVA	Prema Racing	Prema Racing	Tatuus F4-T421	R	<b>1'45.320</b>	0.489	0.015	7
10	<b>71 REHM</b> Maxim	DEU	US Racing	US Racing	Tatuus F4-T421	R	<b>1'45.321</b>	0.490	0.001	8
11	<b>36 JONSSON</b> Gustav	SWE	Van Amersfoort Racing	Van Amersfoort Racing	Tatuus F4-T421		<b>1'45.330</b>	0.499	0.009	6
12	<b>10 FERREIRA</b> Matheus	BRA	US Racing	US Racing	Tatuus F4-T421		<b>1'45.349</b>	0.518	0.019	8
13	<b>14 AL DHAHERI</b> Rashid	UAE	Prema Racing	Prema Racing	Tatuus F4-T421		<b>1'45.392</b>	0.561	0.043	7
14	<b>23 FRANCO</b> Reno	NLD	Jenzer Motorsport	Jenzer Motorsport	Tatuus F4-T421		<b>1'45.404</b>	0.573	0.012	8
15	<b>73 OLIVIERI</b> Emanuele	ITA	AKM Motorsport	AKM Motorsport	Tatuus F4-T421	R	<b>1'45.522</b>	0.691	0.118	8
16	<b>16 LARINI</b> Davide	ITA	PHM AIX Racing	PHM AIX Racing	Tatuus F4-T421		<b>1'45.538</b>	0.707	0.016	7
17	<b>21 ISCHER</b> Ethan	CHE	Jenzer Motorsport	Jenzer Motorsport	Tatuus F4-T421		<b>1'45.594</b>	0.763	0.056	8
18	<b>7 SAMMALISTO</b> Luka	FIN	R-ACE GP	R-ACE GP	Tatuus F4-T421	R	<b>1'45.668</b>	0.837	0.074	6
19	<b>3 POPOV</b> Maksimilian	GRD	PHM AIX Racing	PHM AIX Racing	Tatuus F4-T421	R	<b>1'45.726</b>	0.895	0.058	7
20	<b>88 HODENIUS</b> Lin	NLD	Van Amersfoort Racing	Van Amersfoort Racing	Tatuus F4-T421		<b>1'45.744</b>	0.913	0.018	7
21	<b>8 KOSTIC</b> Andrija	SRB	Van Amersfoort Racing	Van Amersfoort Racing	Tatuus F4-T421	R	<b>1'45.766</b>	0.935	0.022	7
22	<b>70 MRAD</b> Kamal	AUS	PHM AIX Racing	PHM AIX Racing	Tatuus F4-T421	R	<b>1'45.813</b>	0.982	0.047	7
23	<b>55 RODELLA</b> Alvisè	ITA	Van Amersfoort Racing	Van Amersfoort Racing	Tatuus F4-T421		<b>1'45.851</b>	1.020	0.038	7
24	<b>77 YEH</b> Enzo	CHN	R-ACE GP	R-ACE GP	Tatuus F4-T421	R	<b>1'45.924</b>	1.093	0.073	6
25	<b>49 PETROVIC</b> Andrej	SRB	PHM AIX Racing	PHM AIX Racing	Tatuus F4-T421	R	<b>1'45.955</b>	1.124	0.031	8
26	<b>24 ZHANG</b> Shimo	CHN	Jenzer Motorsport	Jenzer Motorsport	Tatuus F4-T421	R	<b>1'46.139</b>	1.308	0.184	7
27	<b>22 FREY</b> Enea	CHE	Jenzer Motorsport	Jenzer Motorsport	Tatuus F4-T421	R	<b>1'46.170</b>	1.339	0.031	7
28	<b>11 VIISOREANU</b> Luca	ROU	Real Racing	Real Racing	Tatuus F4-T421	R	<b>1'46.263</b>	1.432	0.093	7
29	<b>62 ROBINSON</b> Edward	ESP	AS Motorsport	AS Motorsport	Tatuus F4-T421	R	<b>1'46.332</b>	1.501	0.069	7
30	<b>52 SAVINKOV</b> Oleksandr	UKR	AKM Motorsport	AKM Motorsport	Tatuus F4-T421	R	<b>1'46.416</b>	1.585	0.084	7
31	<b>20 RYBA</b> Matus	SVK	Jenzer Motorsport	Jenzer Motorsport	Tatuus F4-T421	R	<b>1'46.428</b>	1.597	0.012	8
32	<b>9 STACK</b> Everett	USA	PHM AIX Racing	PHM AIX Racing	Tatuus F4-T421		<b>1'46.517</b>	1.686	0.089	7
33	<b>34 MACEDO</b> Francisco	PRT	Cram Motorsport	Cram Motorsport	Tatuus F4-T421	R	<b>1'46.626</b>	1.795	0.109	3
34	<b>18 KOLLER</b> Jan	CZE	BVM Racing	BVM Racing	Tatuus F4-T421	R	<b>1'46.917</b>	2.086	0.291	5
35	<b>5 DOBRZANSKI</b> Wiktor	POL	AKM Motorsport	AKM Motorsport	Tatuus F4-T421		<b>1'47.383</b>	2.552	0.466	7
36	<b>29 BERREBY</b> Nathanael	CHE	Maffi Racing	Maffi Racing	Tatuus F4-T421	R				0
37	<b>19 ANURAG</b> Kabir	SGP	US Racing	US Racing	Tatuus F4-T421	R				0
38	<b>54 HOLGUIN</b> Gabriel	VEN	Maffi Racing	Maffi Racing	Tatuus F4-T421	R				0

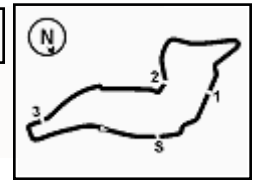
 Qualifying Lap Time (110% of 1'45.064): **1'55.571**

Humidity:	36%	AIR	27°C
Condition:	DRY	Track	40°C

Stewards : Ronny Guarini Franco Leoni Raffaele Giammaria

Start 01/06/2024 11:17 End 11:34





# ACI Racing Weekend Imola, 1-2 Giugno 2024

## Italian F4 Championship - Results Qualifying 2

 Imola Circuit 4.909 m  
 2 / 2

### Penalty and Infringement

 11.22    **3 M. POPOV**    Time Deleted (1'46.295) - Exceeded Track Limits - Turn 14

### Fastest Laps Sequence

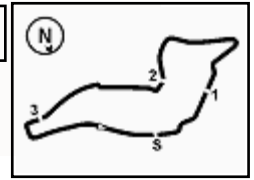
No.	Entrant	Nat	Team	Car	Local Time	Time	Gap	Avg
23	R. FRANCOT	NLD	Jenzer Motorsport	Tatuus F4-T421	11:20'50.735	<b>1'50.027</b>		160,619
80	A. POWELL	USA	Prema Racing	Tatuus F4-T421	11:21'17.947	<b>1'49.425</b>	-0.602	161,502
77	E. YEH	CHN	R-ACE GP	Tatuus F4-T421	11:21'18.729	<b>1'48.916</b>	-0.509	162,257
5	W. DOBRZANSKI	POL	AKM Motorsport	Tatuus F4-T421	11:21'25.580	<b>1'48.127</b>	-0.789	163,441
23	R. FRANCOT	NLD	Jenzer Motorsport	Tatuus F4-T421	11:22'36.431	<b>1'45.696</b>	-2.431	167,200
45	J. BEETON	AUS	US Racing	Tatuus F4-T421	11:22'40.356	<b>1'45.686</b>	-0.010	167,216
27	F. SLATER	GBR	Prema Racing	Tatuus F4-T421	11:22'59.514	<b>1'45.219</b>	-0.467	167,958
6	H. YAMAKOSHI	JPN	Van Amersfoort Racing	Tatuus F4-T421	11:23'41.921	<b>1'45.144</b>	-0.075	168,078
6	H. YAMAKOSHI	JPN	Van Amersfoort Racing	Tatuus F4-T421	11:25'26.752	<b>1'44.831</b>	-0.313	168,580

Stewards :            Ronny Guarini            Franco Leoni            Raffaele Giammaria

01/06/2024    Start 11:17    End 11:34

Powered by FICr PERUGIA TIMING





Imola Circuit 4.909 m

# ACI Racing Weekend Imola, 1-2 Giugno 2024

## Italian F4 Championship - Best Sectors & Speed Qualifying 2

### BEST LAP

1	6 YAMAKOSHI Hiyu	Tatuus F4-T421	1'44.831
2	45 BEETON Jack	Tatuus F4-T421	1'45.177
3	31 BOHRA Akshay	Tatuus F4-T421	1'45.184
4	80 POWELL Alex	Tatuus F4-T421	1'45.195
5	27 SLATER Freddie	Tatuus F4-T421	1'45.212
6	12 PRADEL Gianmarco	Tatuus F4-T421	1'45.267
7	50 GOWDA Dion	Tatuus F4-T421	1'45.274
8	51 NAKAMURA-BERTA Kean	Tatuus F4-T421	1'45.305
9	33 STOLCERMANIS Tomass	Tatuus F4-T421	1'45.320
10	71 REHM Maxim	Tatuus F4-T421	1'45.321
11	36 JONSSON Gustav	Tatuus F4-T421	1'45.330
12	10 FERREIRA Matheus	Tatuus F4-T421	1'45.349
13	14 AL DHAHERI Rashid	Tatuus F4-T421	1'45.392
14	23 FRANCO Reno	Tatuus F4-T421	1'45.404
15	73 OLIVIERI Emanuele	Tatuus F4-T421	1'45.522
16	16 LARINI Davide	Tatuus F4-T421	1'45.538
17	21 ISCHER Ethan	Tatuus F4-T421	1'45.594
18	7 SAMMALISTO Luka	Tatuus F4-T421	1'45.668
19	3 POPOV Maksimilian	Tatuus F4-T421	1'45.726
20	88 HODENIUS Lin	Tatuus F4-T421	1'45.744
21	8 KOSTIC Andrija	Tatuus F4-T421	1'45.766
22	70 MRAD Kamal	Tatuus F4-T421	1'45.813
23	55 RODELLA Alvis	Tatuus F4-T421	1'45.851
24	77 YEH Enzo	Tatuus F4-T421	1'45.924
25	49 PETROVIC Andrej	Tatuus F4-T421	1'45.955
26	24 ZHANG Shimo	Tatuus F4-T421	1'46.139
27	22 FREY Enea	Tatuus F4-T421	1'46.170
28	11 VIISOREANU Luca	Tatuus F4-T421	1'46.263
29	62 ROBINSON Edward	Tatuus F4-T421	1'46.332
30	52 SAVINKOV Oleksandr	Tatuus F4-T421	1'46.416
31	20 RYBA Matus	Tatuus F4-T421	1'46.428
32	9 STACK Everett	Tatuus F4-T421	1'46.517
33	34 MACEDO Francisco	Tatuus F4-T421	1'46.626
34	18 KOLLER Jan	Tatuus F4-T421	1'46.917
35	5 DOBRZANSKI Wiktor	Tatuus F4-T421	1'47.383
36	19 ANURAG Kabir	Tatuus F4-T421	
37	29 BERREBY Nathanael	Tatuus F4-T421	
38	54 HOLGUIN Gabriel	Tatuus F4-T421	

### SPEED

1	73 OLIVIERI Emanuele	Tatuus F4-T421	241,6
2	62 ROBINSON Edward	Tatuus F4-T421	237,9
3	11 VIISOREANU Luca	Tatuus F4-T421	236,8
4	20 RYBA Matus	Tatuus F4-T421	236,8
5	51 NAKAMURA-BERTA Kean	Tatuus F4-T421	236,3
6	27 SLATER Freddie	Tatuus F4-T421	235,8
7	71 REHM Maxim	Tatuus F4-T421	235,8
8	77 YEH Enzo	Tatuus F4-T421	235,3
9	31 BOHRA Akshay	Tatuus F4-T421	235,3
10	10 FERREIRA Matheus	Tatuus F4-T421	235,3
11	50 GOWDA Dion	Tatuus F4-T421	235,3
12	14 AL DHAHERI Rashid	Tatuus F4-T421	234,8
13	22 FREY Enea	Tatuus F4-T421	234,8
14	12 PRADEL Gianmarco	Tatuus F4-T421	234,8
15	33 STOLCERMANIS Tomass	Tatuus F4-T421	234,8
16	16 LARINI Davide	Tatuus F4-T421	234,8
17	45 BEETON Jack	Tatuus F4-T421	234,3
18	80 POWELL Alex	Tatuus F4-T421	234,3
19	21 ISCHER Ethan	Tatuus F4-T421	233,8
20	18 KOLLER Jan	Tatuus F4-T421	233,8
21	70 MRAD Kamal	Tatuus F4-T421	233,3
22	7 SAMMALISTO Luka	Tatuus F4-T421	233,3
23	8 KOSTIC Andrija	Tatuus F4-T421	233,3
24	34 MACEDO Francisco	Tatuus F4-T421	232,8
25	52 SAVINKOV Oleksandr	Tatuus F4-T421	232,8
26	3 POPOV Maksimilian	Tatuus F4-T421	232,8
27	9 STACK Everett	Tatuus F4-T421	232,8
28	24 ZHANG Shimo	Tatuus F4-T421	232,3
29	5 DOBRZANSKI Wiktor	Tatuus F4-T421	231,8
30	6 YAMAKOSHI Hiyu	Tatuus F4-T421	230,8
31	55 RODELLA Alvis	Tatuus F4-T421	230,8
32	88 HODENIUS Lin	Tatuus F4-T421	230,8
33	23 FRANCO Reno	Tatuus F4-T421	230,3
34	36 JONSSON Gustav	Tatuus F4-T421	229,3
35	49 PETROVIC Andrej	Tatuus F4-T421	229,3

### SEG. 1

1	31 BOHRA Akshay	22.476
2	80 POWELL Alex	22.489
3	51 NAKAMURA-BERTA Ke	22.554
4	6 YAMAKOSHI Hiyu	22.559
5	12 PRADEL Gianmarco	22.560
6	33 STOLCERMANIS Tomas	22.563
7	71 REHM Maxim	22.575
8	10 FERREIRA Matheus	22.590
9	50 GOWDA Dion	22.597
10	73 OLIVIERI Emanuele	22.602
11	14 AL DHAHERI Rashid	22.604
12	27 SLATER Freddie	22.606
13	45 BEETON Jack	22.615
14	16 LARINI Davide	22.633
15	49 PETROVIC Andrej	22.638
16	88 HODENIUS Lin	22.642
17	23 FRANCO Reno	22.643
18	70 MRAD Kamal	22.653
19	11 VIISOREANU Luca	22.658
20	7 SAMMALISTO Luka	22.658
21	8 KOSTIC Andrija	22.662
22	24 ZHANG Shimo	22.663
23	22 FREY Enea	22.665
24	36 JONSSON Gustav	22.684
25	55 RODELLA Alvis	22.701
26	21 ISCHER Ethan	22.704
27	77 YEH Enzo	22.709
28	18 KOLLER Jan	22.726
29	9 STACK Everett	22.727
30	3 POPOV Maksimilian	22.732
31	20 RYBA Matus	22.779
32	34 MACEDO Francisco	22.784
33	52 SAVINKOV Oleksandr	22.857
34	62 ROBINSON Edward	22.875
35	5 DOBRZANSKI Wiktor	22.958

### SEG. 2

1	6 YAMAKOSHI Hiyu	33.728
2	36 JONSSON Gustav	33.740
3	27 SLATER Freddie	33.797
4	45 BEETON Jack	33.819
5	21 ISCHER Ethan	33.831
6	51 NAKAMURA-BERTA Ke	33.832
7	33 STOLCERMANIS Tomas	33.856
8	23 FRANCO Reno	33.857
9	14 AL DHAHERI Rashid	33.862
10	12 PRADEL Gianmarco	33.874
11	31 BOHRA Akshay	33.910
12	7 SAMMALISTO Luka	33.915
13	80 POWELL Alex	33.921
14	10 FERREIRA Matheus	33.936
15	50 GOWDA Dion	33.954
16	71 REHM Maxim	33.970
17	16 LARINI Davide	33.995
18	8 KOSTIC Andrija	33.997
19	3 POPOV Maksimilian	34.002
20	73 OLIVIERI Emanuele	34.004
21	88 HODENIUS Lin	34.008
22	77 YEH Enzo	34.051
23	70 MRAD Kamal	34.080
24	22 FREY Enea	34.100
25	49 PETROVIC Andrej	34.123
26	55 RODELLA Alvis	34.158
27	52 SAVINKOV Oleksandr	34.201
28	20 RYBA Matus	34.208
29	24 ZHANG Shimo	34.209
30	9 STACK Everett	34.233
31	62 ROBINSON Edward	34.254
32	11 VIISOREANU Luca	34.271
33	18 KOLLER Jan	34.441
34	34 MACEDO Francisco	34.454
35	5 DOBRZANSKI Wiktor	34.617

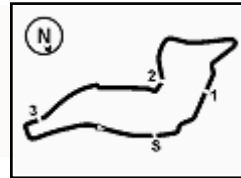
### SEG. 3

1	6 YAMAKOSHI Hiyu	29.661
2	27 SLATER Freddie	29.798
3	45 BEETON Jack	29.810
4	16 LARINI Davide	29.821
5	10 FERREIRA Matheus	29.835
6	12 PRADEL Gianmarco	29.846
7	23 FRANCO Reno	29.848
8	31 BOHRA Akshay	29.855
9	71 REHM Maxim	29.862
10	33 STOLCERMANIS Tomas	29.867
11	50 GOWDA Dion	29.893
12	80 POWELL Alex	29.894
13	51 NAKAMURA-BERTA Ke	29.902
14	7 SAMMALISTO Luka	29.950
15	14 AL DHAHERI Rashid	29.953
16	36 JONSSON Gustav	29.962
17	73 OLIVIERI Emanuele	29.965
18	70 MRAD Kamal	29.976
19	3 POPOV Maksimilian	29.984
20	55 RODELLA Alvis	29.990
21	8 KOSTIC Andrija	30.033
22	62 ROBINSON Edward	30.035
23	49 PETROVIC Andrej	30.045
24	77 YEH Enzo	30.051
25	21 ISCHER Ethan	30.057
26	22 FREY Enea	30.063
27	88 HODENIUS Lin	30.073
28	11 VIISOREANU Luca	30.106
29	52 SAVINKOV Oleksandr	30.123
30	9 STACK Everett	30.147
31	24 ZHANG Shimo	30.199
32	20 RYBA Matus	30.218
33	34 MACEDO Francisco	30.233
34	18 KOLLER Jan	30.339
35	5 DOBRZANSKI Wiktor	30.533

### SEG. 4

1	27 SLATER Freddie	18.776
2	50 GOWDA Dion	18.791
3	80 POWELL Alex	18.827
4	45 BEETON Jack	18.833
5	73 OLIVIERI Emanuele	18.836
6	6 YAMAKOSHI Hiyu	18.838
7	33 STOLCERMANIS Tomas	18.850
8	51 NAKAMURA-BERTA Ke	18.852
9	71 REHM Maxim	18.870
10	7 SAMMALISTO Luka	18.871
11	31 BOHRA Akshay	18.873
12	55 RODELLA Alvis	18.877
13	36 JONSSON Gustav	18.885
14	24 ZHANG Shimo	18.887
15	77 YEH Enzo	18.894
16	14 AL DHAHERI Rashid	18.896
17	88 HODENIUS Lin	18.898
18	8 KOSTIC Andrija	18.908
19	70 MRAD Kamal	18.908
20	23 FRANCO Reno	18.909
21	11 VIISOREANU Luca	18.911
22	10 FERREIRA Matheus	18.919
23	12 PRADEL Gianmarco	18.925
24	21 ISCHER Ethan	18.935
25	3 POPOV Maksimilian	18.940
26	16 LARINI Davide	18.946
27	22 FREY Enea	18.964
28	62 ROBINSON Edward	18.977
29	52 SAVINKOV Oleksandr	18.998
30	49 PETROVIC Andrej	18.999
31	20 RYBA Matus	19.030
32	34 MACEDO Francisco	19.039
33	18 KOLLER Jan	19.079
34	9 STACK Everett	19.089
35	5 DOBRZANSKI Wiktor	19.122





## ACI Racing Weekend Imola, 1-2 Giugno 2024

### Italian F4 Championship - Ideal Time Qualifying 2

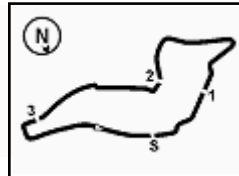
 Imola Circuit 4.909 m  
**1 / 2**

No. Driver	Car	Seg. 1 Diff. 1	Seg. 2 Diff. 2	Seg. 3 Diff. 3	Seg. 4 Diff. 4	Ideal Time		
						Best Lap	Pos.	Diff.
1 <b>6 YAMAKOSHI H.</b> (JPN)	Tatuus F4-T421	22.559	<b>33.728</b> +0.045	<b>29.661</b>	18.838	<b>1'44.786</b> 1'44.831	1	0.045
2 <b>27 SLATER F.</b> (GBR)	Tatuus F4-T421	22.606	33.797 +0.145	29.798 +0.048	<b>18.776</b> +0.042	<b>1'44.977</b> 1'45.212	5	0.235
3 <b>45 BEETON J.</b> (AUS)	Tatuus F4-T421	22.615 +0.016	33.819 +0.007	29.810 +0.006	18.833 +0.071	<b>1'45.077</b> 1'45.177	2	0.100
4 <b>31 BOHRA A.</b> (USA)	Tatuus F4-T421	<b>22.476</b>	33.910 +0.070	29.855	18.873	<b>1'45.114</b> 1'45.184	3	0.070
5 <b>80 POWELL A.</b> (USA)	Tatuus F4-T421	22.489	33.921	29.894	18.827 +0.064	<b>1'45.131</b> 1'45.195	4	0.064
6 <b>33 STOLCERMANIS T.</b> (LVA)	Tatuus F4-T421	22.563 +0.081	33.856	29.867 +0.026	18.850 +0.077	<b>1'45.136</b> 1'45.320	9	0.184
7 <b>51 NAKAMURA-BERTA K.</b>	Tatuus F4-T421	22.554 +0.031	33.832	29.902 +0.117	18.852 +0.017	<b>1'45.140</b> 1'45.305	8	0.165
8 <b>12 PRADEL G.</b> (AUS)	Tatuus F4-T421	22.560	33.874 +0.036	29.846	18.925 +0.026	<b>1'45.205</b> 1'45.267	6	0.062
9 <b>50 GOWDA D.</b> (IND)	Tatuus F4-T421	22.597	33.954	29.893 +0.039	18.791	<b>1'45.235</b> 1'45.274	7	0.039
10 <b>23 FRANCO R.</b> (NLD)	Tatuus F4-T421	22.643	33.857 +0.123	29.848 +0.019	18.909 +0.005	<b>1'45.257</b> 1'45.404	14	0.147
11 <b>36 JONSSON G.</b> (SWE)	Tatuus F4-T421	22.684 +0.034	33.740	29.962 +0.025	18.885	<b>1'45.271</b> 1'45.330	11	0.059
12 <b>71 REHM M.</b> (DEU)	Tatuus F4-T421	22.575	33.970 +0.004	29.862 +0.040	18.870	<b>1'45.277</b> 1'45.321	10	0.044
13 <b>10 FERREIRA M.</b> (BRA)	Tatuus F4-T421	22.590 +0.064	33.936 +0.005	29.835	18.919	<b>1'45.280</b> 1'45.349	12	0.069
14 <b>14 AL DHAHERI R.</b> (UAE)	Tatuus F4-T421	22.604 +0.075	33.862	29.953	18.896 +0.002	<b>1'45.315</b> 1'45.392	13	0.077
15 <b>7 SAMMALISTO L.</b> (FIN)	Tatuus F4-T421	22.658 +0.132	33.915 +0.123	29.950	18.871 +0.019	<b>1'45.394</b> 1'45.668	18	0.274
16 <b>16 LARINI D.</b> (ITA)	Tatuus F4-T421	22.633 +0.074	33.995	29.821	18.946 +0.069	<b>1'45.395</b> 1'45.538	16	0.143
17 <b>73 OLIVIERI E.</b> (ITA)	Tatuus F4-T421	22.602 +0.071	34.004	29.965	18.836 +0.044	<b>1'45.407</b> 1'45.522	15	0.115
18 <b>21 ISCHER E.</b> (CHE)	Tatuus F4-T421	22.704 +0.047	33.831	30.057	18.935 +0.020	<b>1'45.527</b> 1'45.594	17	0.067
19 <b>8 KOSTIC A.</b> (SRB)	Tatuus F4-T421	22.662 +0.089	33.997	30.033 +0.077	18.908	<b>1'45.600</b> 1'45.766	21	0.166
20 <b>70 MRAD K.</b> (AUS)	Tatuus F4-T421	22.653 +0.052	34.080 +0.037	29.976 +0.076	18.908 +0.031	<b>1'45.617</b> 1'45.813	22	0.196
21 <b>88 HODENIUS L.</b> (NLD)	Tatuus F4-T421	22.642 +0.085	34.008	30.073 +0.038	18.898	<b>1'45.621</b> 1'45.744	20	0.123
22 <b>3 POPOV M.</b> (GRD)	Tatuus F4-T421	22.732 +0.003	34.002 +0.016	29.984	18.940 +0.049	<b>1'45.658</b> 1'45.726	19	0.068
23 <b>77 YEH E.</b> (CHN)	Tatuus F4-T421	22.709 +0.047	34.051	30.051 +0.172	18.894	<b>1'45.705</b> 1'45.924	24	0.219
24 <b>55 RODELLA A.</b> (ITA)	Tatuus F4-T421	22.701 +0.046	34.158 +0.052	29.990 +0.027	18.877	<b>1'45.726</b> 1'45.851	23	0.125
25 <b>22 FREY E.</b> (CHE)	Tatuus F4-T421	22.665 +0.137	34.100 +0.049	30.063 +0.080	18.964 +0.112	<b>1'45.792</b> 1'46.170	27	0.378
26 <b>49 PETROVIC A.</b> (SRB)	Tatuus F4-T421	22.638 +0.018	34.123 +0.057	30.045 +0.040	18.999 +0.035	<b>1'45.805</b> 1'45.955	25	0.150
27 <b>11 VIISOREANU L.</b> (ROU)	Tatuus F4-T421	22.658 +0.190	34.271 +0.061	30.106	18.911 +0.066	<b>1'45.946</b> 1'46.263	28	0.317
28 <b>24 ZHANG S.</b> (CHN)	Tatuus F4-T421	22.663	34.209	30.199 +0.076	18.887 +0.105	<b>1'45.958</b> 1'46.139	26	0.181
29 <b>62 ROBINSON E.</b> (ESP)	Tatuus F4-T421	22.875 +0.031	34.254 +0.160	30.035	18.977	<b>1'46.141</b> 1'46.332	29	0.191
30 <b>52 SAVINKOV O.</b> (UKR)	Tatuus F4-T421	22.857	34.201 +0.167	30.123	18.998 +0.070	<b>1'46.179</b> 1'46.416	30	0.237
31 <b>9 STACK E.</b> (USA)	Tatuus F4-T421	22.727 +0.089	34.233	30.147 +0.232	19.089	<b>1'46.196</b> 1'46.517	32	0.321
32 <b>20 RYBA M.</b> (SVK)	Tatuus F4-T421	22.779	34.208 +0.039	30.218 +0.093	19.030 +0.061	<b>1'46.235</b> 1'46.428	31	0.193
33 <b>34 MACEDO F.</b> (PRT)	Tatuus F4-T421	22.784 +0.084	34.454	30.233 +0.032	19.039	<b>1'46.510</b> 1'46.626	33	0.116

01/06/2024

Powered by FICr PERUGIA TIMING





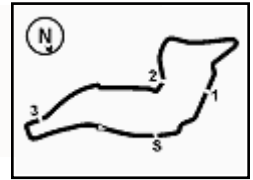
# ACI Racing Weekend Imola, 1-2 Giugno 2024

## Italian F4 Championship - Ideal Time Qualifying 2

 Imola Circuit 4.909 m  
**2 / 2**

No.	Driver	Car	Seg. 1	Seg. 2	Seg. 3	Seg. 4	Ideal Time		
			Diff. 1	Diff. 2	Diff. 3	Diff. 4	Best Lap	Pos.	Diff.
34	<b>18 KOLLER J.</b> (CZE)	Tatuus F4-T421	22.726 +0.321	34.441 +0.011	30.339	19.079	<b>1'46.585</b>		
35	<b>5 DOBRZANSKI W.</b> (POL)	Tatuus F4-T421	22.958 +0.090	34.617 +0.005	30.533	19.122 +0.058	<b>1'47.230</b>	34	0.332
	<b>19 ANURAG K.</b> (SGP)	Tatuus F4-T421					<b>1'47.383</b>	35	0.153
	<b>29 BERREBY N.</b> (CHE)	Tatuus F4-T421							
	<b>54 HOLGUIN G.</b> (VEN)	Tatuus F4-T421							
<b>Overall Ideal Time</b>			22.476	33.728	29.661	18.776	<b>1'44.641</b>		





Imola Circuit 4.909 m

**1 / 4**
**3 M. POPOV (1'45.726)**

Lap	Seg.1	Seg.2	Seg.3	Seg.4	Lap Time	km/h	Local Time
1		36.449	32.433	19.413		161,0	
2	24.085	35.199	35.963	19.451	1'54.698	191,2	11:21'01.712
3	22.810	34.113	30.346	19.026	1'46.295C	231,3	11:22'48.007
4	<b>22.732</b>	<b>34.002</b>	30.093	<b>18.940</b>	1'45.767	<b>232,8</b>	11:24'33.774
5	22.735	34.018	<b>29.984</b>	18.989	<b>1'45.726</b>	231,3	11:26'19.500
6	28.589	35.373	30.765	19.160	1'53.887	177,0	11:28'13.387
7	22.766	34.215	30.132	18.998	1'46.111	231,8	11:29'59.498
8	22.849	34.072	30.183	19.208	1'46.312	229,8	11:31'45.810
9	22.852	34.152	30.030			230,8	

5	22.862	34.309	30.219	19.149	1'46.539	231,8	11:26'23.872
6	22.890	34.413	<b>30.147</b>	19.195	1'46.645	229,8	11:28'10.517
7	22.816	<b>34.233</b>	30.379	<b>19.089</b>	<b>1'46.517</b>	230,8	11:29'57.034
8	<b>22.727</b>	34.411	38.628	19.345	1'55.111	<b>232,8</b>	11:31'52.145
9	23.137	34.755	30.516			231,3	

**10 M. FERREIRA (1'45.349)**

Lap	Seg.1	Seg.2	Seg.3	Seg.4	Lap Time	km/h	Local Time
1							
2	41.735	37.010	31.748	19.351	2'09.844P	170,1	11:20'14.810
3	23.581	35.490	34.929	20.144	1'54.144	220,9	11:22'08.954
4	22.737	33.967	29.989	18.960	1'45.653	228,8	11:23'54.607
5	22.654	33.941	<b>29.835</b>	<b>18.919</b>	<b>1'45.349</b>	<b>235,3</b>	11:25'39.956
6	<b>22.590</b>	33.937	29.980	18.967	1'45.474	230,3	11:27'25.430
7	22.605	33.973	43.788	20.466	2'00.832	229,8	11:29'26.262
8	22.833	33.979	29.914	18.984	1'45.710	228,8	11:31'11.972
9	22.692	<b>33.936</b>	29.896	19.002	1'45.526	231,3	11:32'57.498

**5 W. DOBRZANSKI (1'47.383)**

Lap	Seg.1	Seg.2	Seg.3	Seg.4	Lap Time	km/h	Local Time
1		36.772	32.091	19.604		165,1	
2	23.435	34.886	30.648	19.158	1'48.127	229,8	11:21'25.580
3	23.144	37.917	34.270	19.348	1'54.679	231,3	11:23'20.259
4	22.990	34.650	30.623	19.145	1'47.408	<b>231,8</b>	11:25'07.667
5	<b>22.958</b>	34.656	30.685	19.338	1'47.637	231,3	11:26'55.304
6	23.012	<b>34.617</b>	30.676	19.181	1'47.486	<b>231,8</b>	11:28'42.790
7	23.048	34.622	<b>30.533</b>	19.180	<b>1'47.383</b>	230,3	11:30'30.173
8	23.022	34.620	30.742	<b>19.122</b>	1'47.506	<b>231,8</b>	11:32'17.679

**11 L. VIISOREANU (1'46.263)**

Lap	Seg.1	Seg.2	Seg.3	Seg.4	Lap Time	km/h	Local Time
1		36.814	34.280	19.943		163,9	
2	23.790	36.138	31.786	20.473	1'52.187	220,0	11:21'10.506
3	22.848	34.332	<b>30.106</b>	18.977	<b>1'46.263</b>	<b>236,8</b>	11:22'56.769
4	23.523	34.487	30.536	<b>18.911</b>	1'47.457	235,3	11:24'44.226
5	<b>22.658</b>	<b>34.271</b>	33.275	19.026	1'49.230	232,3	11:26'33.456
6	22.999	34.328	30.355	19.133	1'46.815	231,8	11:28'20.271
7	22.875	34.313	30.125	19.108	1'46.421	229,8	11:30'06.692
8	22.844	34.398	30.144	19.078	1'46.464	229,8	11:31'53.156
9	22.894	34.411	32.348			231,3	

**6 H. YAMAKOSHI (1'44.831)**

Lap	Seg.1	Seg.2	Seg.3	Seg.4	Lap Time	km/h	Local Time
1		37.953	33.387	20.168		163,9	
2	23.983	35.476	30.201	19.009	1'48.669	223,1	11:21'56.777
3	22.742	<b>33.728</b>	29.764	18.910	1'45.144	229,8	11:23'41.921
4	<b>22.559</b>	33.773	<b>29.661</b>	<b>18.838</b>	<b>1'44.831</b>	229,8	11:25'26.752
5	22.563	33.833	29.770	18.959	1'45.125	<b>230,8</b>	11:27'11.877
6	23.477	37.108	30.761	19.026	1'50.372	229,3	11:29'02.249
7	22.647	33.753	29.784	18.962	1'45.146	228,8	11:30'47.395
8	22.631	33.774	30.111			229,8	

**12 G. PRADEL (1'45.267)**

Lap	Seg.1	Seg.2	Seg.3	Seg.4	Lap Time	km/h	Local Time
1		36.716	31.613	19.382		148,4	
2	23.336	37.343	33.455	19.071	1'53.205	225,0	11:20'55.260
3	22.714	34.057	29.991	19.093	1'45.855	234,3	11:22'41.115
4	22.726	<b>33.874</b>	30.063	<b>18.925</b>	1'45.588	233,8	11:24'26.703
5	<b>22.560</b>	33.910	<b>29.846</b>	18.951	<b>1'45.267</b>	<b>234,8</b>	11:26'11.970
6	22.569	34.212	29.931	19.055	1'45.767	232,8	11:27'57.737
7	24.814	37.887	30.808	18.947	1'52.456	208,9	11:29'50.193
8	22.715	34.024	30.015	18.987	1'45.741	232,3	11:31'35.934
9	22.670	34.068	29.905	18.946	1'45.589	232,3	11:33'21.523

**7 L. SAMMALISTO (1'45.668)**

Lap	Seg.1	Seg.2	Seg.3	Seg.4	Lap Time	km/h	Local Time
1		35.756	31.199	19.172		168,2	
2	23.244	34.577	30.816	22.747	1'51.384	232,3	11:21'22.894
3	25.251	35.043	32.115	19.481	1'51.890	195,7	11:23'14.784
4	22.790	34.038	<b>29.950</b>	18.890	<b>1'45.668</b>	229,8	11:25'00.452
5	22.665	33.957	30.076	19.007	1'45.705	<b>233,3</b>	11:26'46.157
6	22.744	34.263	36.960	19.865	1'53.832	<b>233,3</b>	11:28'39.989
7	22.763	34.077	30.025	<b>18.871</b>	1'45.736	232,3	11:30'25.725
8	<b>22.658</b>	<b>33.915</b>	31.890			230,8	

**14 R. AL DHAHERI (1'45.392)**

Lap	Seg.1	Seg.2	Seg.3	Seg.4	Lap Time	km/h	Local Time
1		36.544	33.019	19.701		166,9	
2	23.616	34.996	32.444	20.193	1'51.249	234,3	11:21'08.424
3	22.829	34.044	30.072	19.249	1'46.194	232,3	11:22'54.618
4	22.642	34.005	30.052	19.079	1'45.778	<b>234,8</b>	11:24'40.396
5	22.656	33.939	29.978	18.910	1'45.483	233,3	11:26'25.879
6	22.643	34.033	30.603	<b>18.896</b>	1'46.175	233,8	11:28'12.054
7	22.679	<b>33.862</b>	<b>29.953</b>	18.898	<b>1'45.392</b>	233,8	11:29'57.446
8	<b>22.604</b>	34.582	30.015	18.916	1'46.117	233,8	11:31'43.563
9	22.719	34.026	31.094			231,3	

**8 A. KOSTIC (1'45.766)**

Lap	Seg.1	Seg.2	Seg.3	Seg.4	Lap Time	km/h	Local Time
1		39.903	32.534	19.577		166,2	
2	23.483	35.708	35.627	20.717	1'55.535	227,8	11:22'14.084
3	22.751	<b>33.997</b>	30.110	<b>18.908</b>	<b>1'45.766</b>	231,8	11:23'59.850
4	22.804	34.210	<b>30.033</b>	18.979	1'46.026	232,8	11:25'45.876
5	<b>22.662</b>	34.246	30.709	19.036	1'46.653	<b>233,3</b>	11:27'32.529
6	27.041	37.988	31.581	19.569	1'56.179	197,8	11:29'28.708
7	22.923	34.144	30.309	18.909	1'46.285	230,8	11:31'14.993
8	22.687	34.182	30.064	18.985	1'45.918	230,8	11:33'00.911

**16 D. LARINI (1'45.538)**

Lap	Seg.1	Seg.2	Seg.3	Seg.4	Lap Time	km/h	Local Time
1		36.444	32.984	19.406		163,6	
2	23.342	35.805	35.242	19.207	1'53.596	227,4	11:20'58.914
3	22.841	34.209	29.952	19.047	1'46.049	232,8	11:22'44.963
4	22.744	34.090	30.059	18.967	1'45.860	231,8	11:24'30.823
5	22.707	<b>33.995</b>	<b>29.821</b>	19.015	<b>1'45.538</b>	232,3	11:26'16.361
6	22.698	34.095	29.954	19.036	1'45.783	231,8	11:28'02.144

**9 E. STACK (1'46.517)**

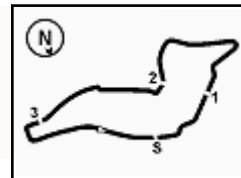
Lap	Seg.1	Seg.2	Seg.3	Seg.4	Lap Time	km/h	Local Time
1		36.412	31.828	19.807		164,1	
2	23.795	35.074	36.201	19.420	1'54.490	223,6	11:21'03.558
3	22.972	34.600	30.441	19.173	1'47.186	<b>232,8</b>	11:22'50.744
4	22.878	34.406	30.197	19.108	1'46.589	231,3	11:24'37.333

01/06/2024

P = Pits In/Out - C = Lap Time Cancelled

Powered by FICr PERUGIA TIMING





Imola Circuit 4.909 m

2 / 4

7	22.695	34.307	29.906	<b>18.946</b>	1'45.854	232,8	11:29'47.998
8	<b>22.633</b>	34.219	30.001	19.070	1'45.923	<b>234,8</b>	11:31'33.921
9						234,3	

18 J. KOLLER (1'46.917)							
Lap	Seg.1	Seg.2	Seg.3	Seg.4	Lap Time	km/h	Local Time
1		36.580	32.203	19.680		162,2	
2	23.520	36.423	30.946	19.361	1'50.250	224,5	11:21'26.991
3	22.838	34.885	32.027	19.354	1'49.104	233,3	11:23'16.095
4	<b>22.726</b>	34.591	30.576	19.090	1'46.983	<b>233,8</b>	11:25'03.078
5	23.047	34.452	<b>30.339</b>	<b>19.079</b>	<b>1'46.917</b>	231,8	11:26'49.995
6	22.889	34.473	30.654	19.080	1'47.096	232,8	11:28'37.091
7	22.825	<b>34.441</b>	30.412			229,8	

20 M. RYBA (1'46.428)							
Lap	Seg.1	Seg.2	Seg.3	Seg.4	Lap Time	km/h	Local Time
1		37.075	33.256	19.305		166,9	
2	23.205	34.806	33.977	19.631	1'51.619	225,5	11:21'07.170
3	22.984	<b>34.208</b>	<b>30.218</b>	19.185	1'46.595	232,3	11:22'53.765
4	22.879	34.210	30.420	19.621	1'47.130	231,8	11:24'40.895
5	<b>22.779</b>	34.247	30.311	19.091	<b>1'46.428</b>	<b>236,8</b>	11:26'27.323
6	22.849	34.607	30.308	<b>19.030</b>	1'46.794	233,3	11:28'14.117
7	22.808	34.494	30.362	19.127	1'46.791	235,3	11:30'00.908
8	22.958	34.226	30.411	19.197	1'46.792	231,8	11:31'47.700
9	23.010	34.232	30.366	19.057	1'46.665	233,3	11:33'34.365

21 E. ISCHER (1'45.594)							
Lap	Seg.1	Seg.2	Seg.3	Seg.4	Lap Time	km/h	Local Time
1		36.693	31.423	19.459		132,0	
2	23.418	34.608	33.211	19.195	1'50.432	223,6	11:20'51.651
3	22.746	34.230	30.192	<b>18.935</b>	1'46.103	231,8	11:22'37.754
4	22.742	34.161	30.096	18.992	1'45.991	<b>233,8</b>	11:24'23.745
5	22.751	<b>33.831</b>	<b>30.057</b>	18.955	<b>1'45.594</b>	<b>233,8</b>	11:26'09.339
6	22.728	34.032	30.080	19.059	1'45.899	231,3	11:27'55.238
7	<b>22.704</b>	36.043	34.307	18.985	1'52.039	232,3	11:29'47.277
8	22.876	34.089	30.104	18.987	1'46.056	230,8	11:31'33.333
9	22.792	34.099	30.089	19.002	1'45.982	231,8	11:33'19.315

22 E. FREY (1'46.170)							
Lap	Seg.1	Seg.2	Seg.3	Seg.4	Lap Time	km/h	Local Time
1		38.996	34.389	20.110		149,4	
2	24.071	35.463	32.139	20.521	1'52.194	209,3	11:21'09.276
3	22.729	34.200	30.334	19.098	1'46.361	233,3	11:22'55.637
4	<b>22.665</b>	35.917	32.641	19.013	1'50.236	<b>234,8</b>	11:24'45.873
5	22.718	<b>34.100</b>	30.431	19.380	1'46.629	<b>234,8</b>	11:26'32.502
6	27.344	38.459	31.064	19.057	1'55.924	189,1	11:28'28.426
7	22.879	34.579	<b>30.063</b>	<b>18.964</b>	1'46.485	231,8	11:30'14.911
8	22.802	34.149	30.143	19.076	<b>1'46.170</b>	232,8	11:32'01.081

23 R. FRANCO (1'45.404)							
Lap	Seg.1	Seg.2	Seg.3	Seg.4	Lap Time	km/h	Local Time
1		36.159	31.538	19.378		143,6	
2	23.379	34.593	33.011	19.044	1'50.027	220,4	11:20'50.735
3	22.793	34.146	<b>29.848</b>	<b>18.909</b>	1'45.696	228,8	11:22'36.431
4	22.706	33.870	29.918	18.945	1'45.439	229,8	11:24'21.870
5	<b>22.643</b>	33.980	29.867	18.914	<b>1'45.404</b>	228,8	11:26'07.274
6	22.741	<b>33.857</b>	29.950	19.081	1'45.629	<b>230,3</b>	11:27'52.903
7	22.696	37.467	33.528	19.054	1'52.745	228,3	11:29'45.648
8	22.808	33.875	29.888	18.973	1'45.544	227,8	11:31'31.192
9	22.758	34.038	29.928	19.026	1'45.750	228,8	11:33'16.942

24 S. ZHANG (1'46.139)							
Lap	Seg.1	Seg.2	Seg.3	Seg.4	Lap Time	km/h	Local Time
1		38.398	34.581	19.721		157,9	
2	23.766	35.609	32.441	20.363	1'52.179	228,8	11:21'09.770
3	22.721	34.293	30.366	<b>18.887</b>	1'46.267	231,8	11:22'56.037
4	<b>22.663</b>	<b>34.209</b>	30.275	18.992	<b>1'46.139</b>	<b>232,3</b>	11:24'42.176
5	22.710	34.409	<b>30.199</b>	18.997	1'46.315	229,8	11:26'28.491
6	22.773	35.131	30.340	18.980	1'47.224	229,8	11:28'15.715
7	22.750	34.461	30.436	19.080	1'46.727	230,3	11:30'02.442
8	22.743	34.291	30.239	19.013	1'46.286	228,8	11:31'48.728
9	22.888	34.262	31.227			229,8	

27 F. SLATER (1'45.212)							
Lap	Seg.1	Seg.2	Seg.3	Seg.4	Lap Time	km/h	Local Time
1		37.246	32.971	20.153		158,4	
2	23.923	35.678	33.544	19.741	1'52.886	225,0	11:21'14.295
3	22.701	33.841	<b>29.798</b>	18.879	1'45.219	233,3	11:22'59.514
4	22.644	<b>33.797</b>	30.046	<b>18.776</b>	1'45.263	<b>235,8</b>	11:24'44.777
5	24.175	36.753	32.451	19.387	1'52.766	231,3	11:26'37.543
6	<b>22.606</b>	33.942	29.846	18.818	<b>1'45.212</b>	234,3	11:28'22.755
7	26.635	42.503	31.282	18.965	1'59.385	232,8	11:30'22.140
8	22.662	33.836	29.819	18.907	1'45.224	233,3	11:32'07.364

29 N. BERREBY							
Lap	Seg.1	Seg.2	Seg.3	Seg.4	Lap Time	km/h	Local Time
1							

31 A. BOHRA (1'45.184)							
Lap	Seg.1	Seg.2	Seg.3	Seg.4	Lap Time	km/h	Local Time
1							
2	40.757	36.776	32.197	19.458	2'09.188P	169,5	11:20'15.693
3	23.383	35.413	34.766	20.702	1'54.264	231,3	11:22'09.957
4	22.658	33.945	29.960	18.903	1'45.466	232,8	11:23'55.423
5	22.690	<b>33.910</b>	29.880	18.920	1'45.400	233,8	11:25'40.823
6	<b>22.476</b>	33.980	<b>29.855</b>	<b>18.873</b>	<b>1'45.184</b>	234,8	11:27'26.007
7	22.519	34.170	44.218	20.159	2'01.066	<b>235,3</b>	11:29'27.073
8	22.631	33.939	29.917	18.891	1'45.378	233,8	11:31'12.451
9	22.677	33.993	29.951	19.185	1'45.806	233,8	11:32'58.257

33 T. STOLCERMANIS (1'45.320)							
Lap	Seg.1	Seg.2	Seg.3	Seg.4	Lap Time	km/h	Local Time
1							
2	23.689	36.205	33.713	19.859	1'53.466	224,5	11:21'16.348
3	22.752	34.054	29.982	18.867	1'45.655	232,3	11:23'02.003
4	22.652	33.965	<b>29.867</b>	18.903	1'45.387	234,3	11:24'47.390
5	<b>22.563</b>	33.996	30.053	18.858	1'45.470	<b>234,8</b>	11:26'32.860
6	25.481	42.206	33.448	19.222	2'00.357	188,5	11:28'33.217
7	22.783	34.072	30.257	<b>18.850</b>	1'45.962	234,3	11:30'19.179
8	22.644	<b>33.856</b>	29.893	18.927	<b>1'45.320</b>	233,3	11:32'04.499

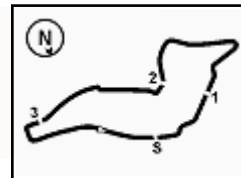
34 F. MACEDO (1'46.626)							
Lap	Seg.1	Seg.2	Seg.3	Seg.4	Lap Time	km/h	Local Time
1		35.964	31.553	19.468		169,0	
2	23.380	34.824	32.333	19.820	1'50.357	227,8	11:21'20.810
3	22.868	<b>34.454</b>	30.265	<b>19.039</b>	<b>1'46.626</b>	228,8	11:23'07.436
4	<b>22.784</b>	34.464	<b>30.233</b>	19.191	1'46.672	231,8	11:24'54.108
5	22.834	34.478	30.441			<b>232,8</b>	

36 G. JONSSON (1'45.330)							
Lap	Seg.1	Seg.2	Seg.3	Seg.4	Lap Time	km/h	Local Time
1		37.152	31.602	19.452		143,8	
2	24.028	34.969	30.484	18.965	1'48.446	199,6	11:21'59.158

01/06/2024 P = Pits In/Out - C = Lap Time Cancelled

Powered by FICr PERUGIA TIMING





Imola Circuit 4.909 m

**3 / 4**

# ACI Racing Weekend Imola, 1-2 Giugno 2024

## Italian F4 Championship - Chronological Analysis Qualifying 2

3	22.718	<b>33.740</b>	29.987	<b>18.885</b>	<b>1'45.330</b>	228,8	11:23'44.488
4	<b>22.684</b>	34.096	<b>29.962</b>	19.007	1'45.749	228,8	11:25'30.237
5	22.724	33.946	30.046	19.023	1'45.739	<b>229,3</b>	11:27'15.976
6	23.595	35.511	30.466	18.901	1'48.473	222,2	11:29'04.449
7	22.714	33.869	30.029	18.948	1'45.560	228,3	11:30'50.009
8	22.712	34.017	30.391			227,8	

6	22.884	<b>34.201</b>	30.281	19.075	1'46.441	231,3	11:28'32.018
7	22.881	34.927	34.169	19.168	1'51.145	229,8	11:30'23.163
8	<b>22.857</b>	34.368	<b>30.123</b>	19.068	<b>1'46.416</b>	230,8	11:32'09.579

**55 A. RODELLA (1'45.851)**

Lap	Seg.1	Seg.2	Seg.3	Seg.4	Lap Time	km/h	Local Time
1		38.331	32.094	19.663		156,1	
2	23.617	35.368	30.464	19.213	1'48.662	227,8	11:22'03.305
3	22.843	34.197	<b>29.990</b>	19.007	1'46.037	230,3	11:23'49.342
4	22.747	34.210	30.017	<b>18.877</b>	<b>1'45.851</b>	229,3	11:25'35.193
5	22.753	34.176	30.085	18.984	1'45.998	<b>230,8</b>	11:27'21.191
6	<b>22.701</b>	35.186	31.587	19.080	1'48.554	229,3	11:29'09.745
7	22.777	34.310	30.134	18.975	1'46.196	229,3	11:30'55.941
8	22.759	<b>34.158</b>	30.231	19.048	1'46.196	229,3	11:32'42.137

**45 J. BEETON (1'45.177)**

Lap	Seg.1	Seg.2	Seg.3	Seg.4	Lap Time	km/h	Local Time
1		36.784	31.466	19.418		151,5	
2	23.411	37.286	33.244	19.150	1'53.091	227,4	11:20'54.670
3	22.760	33.938	29.964	19.024	1'45.686	230,3	11:22'40.356
4	22.735	<b>33.819</b>	29.998	18.930	1'45.482	231,3	11:24'25.838
5	22.631	33.826	29.816	18.904	<b>1'45.177</b>	231,8	11:26'11.015
6	22.648	33.842	<b>29.810</b>	18.902	1'45.202	<b>234,3</b>	11:27'56.217
7	25.776	37.674	30.654	18.967	1'53.071	233,3	11:29'49.288
8	<b>22.615</b>	33.907	29.933	<b>18.833</b>	1'45.288	232,3	11:31'34.576
9	22.926	37.562	31.812			<b>234,3</b>	

**62 E. ROBINSON (1'46.332)**

Lap	Seg.1	Seg.2	Seg.3	Seg.4	Lap Time	km/h	Local Time
1		36.297	32.000	20.106		167,2	
2	23.805	36.031	33.116	21.245	1'54.197	225,9	11:21'18.627
3	22.948	34.870	30.702	19.415	1'47.935	<b>237,9</b>	11:23'06.562
4	22.911	<b>34.254</b>	30.269	19.397	1'46.831	236,3	11:24'53.393
5	22.908	34.287	30.168	19.045	1'46.408	233,3	11:26'39.801
6	<b>22.875</b>	34.715	30.378	19.069	1'47.037	<b>237,9</b>	11:28'26.838
7	22.906	34.414	<b>30.035</b>	<b>18.977</b>	<b>1'46.332</b>	231,8	11:30'13.170
8	22.877	34.380	30.618	19.029	1'46.904	230,8	11:32'00.074

**49 A. PETROVIC (1'45.955)**

Lap	Seg.1	Seg.2	Seg.3	Seg.4	Lap Time	km/h	Local Time
1		36.177	32.880	19.749		159,1	
2	23.551	35.444	35.961	19.349	1'54.305	221,8	11:21'00.455
3	22.692	34.340	30.259	19.032	1'46.323	228,8	11:22'46.778
4	22.656	34.180	30.085	19.034	<b>1'45.955</b>	<b>229,3</b>	11:24'32.733
5	<b>22.638</b>	34.295	30.058	19.055	1'46.046	228,3	11:26'18.779
6	22.715	<b>34.123</b>	30.090	19.054	1'45.982	228,3	11:28'04.761
7	22.666	37.559	31.155	19.065	1'50.445	228,3	11:29'55.206
8	22.683	34.163	30.115	<b>18.999</b>	1'45.960	228,3	11:31'41.166
9	22.663	34.216	<b>30.045</b>	19.059	1'45.983	228,8	11:33'27.149

**70 K. MRAD (1'45.813)**

Lap	Seg.1	Seg.2	Seg.3	Seg.4	Lap Time	km/h	Local Time
1		36.423	31.555	19.596		164,4	
2	23.605	35.523	36.093	19.335	1'54.556	204,5	11:21'02.659
3	22.726	34.217	<b>29.976</b>	19.108	1'46.027	229,3	11:22'48.686
4	22.705	34.117	30.052	18.939	<b>1'45.813</b>	228,8	11:24'34.499
5	<b>22.653</b>	34.234	30.045	<b>18.908</b>	1'45.840	<b>233,3</b>	11:26'20.339
6	22.752	<b>34.080</b>	29.994	19.047	1'45.873	232,3	11:28'06.212
7	22.820	36.658	31.097	19.436	1'50.011	226,9	11:29'56.223
8	22.792	34.291	30.053	19.002	1'46.138	231,8	11:31'42.361
9	22.797	34.358	30.222			227,4	

**50 D. GOWDA (1'45.274)**

Lap	Seg.1	Seg.2	Seg.3	Seg.4	Lap Time	km/h	Local Time
1		36.645	31.848	20.137		163,6	
2	23.754	36.192	32.818	20.540	1'53.304	223,1	11:21'17.096
3	22.764	34.270	30.178	19.271	1'46.483	232,3	11:23'03.579
4	<b>22.597</b>	<b>33.954</b>	29.932	<b>18.791</b>	<b>1'45.274</b>	233,8	11:24'48.853
5	22.723	36.811	31.742	19.388	1'50.664	<b>235,3</b>	11:26'39.517
6	22.900	34.626	30.127	18.888	1'46.541	230,8	11:28'26.058
7	22.694	34.069	30.031	18.852	1'45.646	232,8	11:30'11.704
8	22.655	34.012	29.948	18.870	1'45.485	230,8	11:31'57.189
9	22.672	34.042	<b>29.893</b>	18.995	1'45.602	229,3	11:33'42.791

**71 M. REHM (1'45.321)**

Lap	Seg.1	Seg.2	Seg.3	Seg.4	Lap Time	km/h	Local Time
1		36.378	31.639	19.738		165,9	
2	23.362	36.655	34.263	19.455	1'53.735	223,6	11:20'56.950
3	22.780	34.084	29.938	18.970	1'45.772	230,8	11:22'42.722
4	22.635	<b>33.970</b>	<b>29.862</b>	18.877	1'45.344	234,3	11:24'28.066
5	<b>22.575</b>	33.974	29.902	<b>18.870</b>	<b>1'45.321</b>	234,3	11:26'13.387
6	22.606	33.982	29.873	18.891	1'45.352	231,8	11:27'58.739
7	24.640	38.145	31.165	19.242	1'53.192	<b>235,8</b>	11:29'51.931
8	22.664	34.000	29.889	<b>18.870</b>	1'45.423	233,8	11:31'37.354
9	22.918	34.171	29.987	19.000	1'46.076	233,8	11:33'23.430

**51 K. NAKAMURA-BERTA (1'45.305)**

Lap	Seg.1	Seg.2	Seg.3	Seg.4	Lap Time	km/h	Local Time
1		36.346	31.384	19.477		163,9	
2	23.572	35.308	31.160	20.438	1'50.478	225,0	11:21'17.504
3	22.779	34.478	30.469	19.401	1'47.127	<b>236,3</b>	11:23'04.631
4	22.585	<b>33.832</b>	30.019	18.869	<b>1'45.305</b>	234,3	11:24'49.936
5	<b>22.554</b>	34.116	32.680	19.401	1'48.751	233,3	11:26'38.687
6	22.679	34.106	29.952	18.895	1'45.632	231,3	11:28'24.319
7	22.749	33.904	29.981	18.914	1'45.548	231,8	11:30'09.867
8	22.630	33.912	29.967	<b>18.852</b>	1'45.361	231,3	11:31'55.228
9	22.682	33.860	<b>29.902</b>	18.959	1'45.403	233,8	11:33'40.631

**73 E. OLIVIERI (1'45.522)**

Lap	Seg.1	Seg.2	Seg.3	Seg.4	Lap Time	km/h	Local Time
1		36.595	32.451	19.617		162,9	
2	23.656	36.279	32.034	20.197	1'52.166	233,3	11:21'10.145
3	22.732	34.292	30.355	<b>18.836</b>	1'46.215	238,9	11:22'56.360
4	22.655	34.221	31.066	18.960	1'46.902	<b>241,6</b>	11:24'43.262
5	22.673	<b>34.004</b>	<b>29.965</b>	18.880	<b>1'45.522</b>	236,8	11:26'28.784
6	22.821	34.205	33.462	19.099	1'49.587	237,9	11:28'18.371
7	22.751	34.011	30.000	18.906	1'45.668	230,3	11:30'04.039
8	22.706	34.026	30.016	18.857	1'45.605	237,4	11:31'49.644
9	<b>22.602</b>	34.078	30.073	19.230	1'45.983	234,8	11:33'35.627

**52 O. SAVINKOV (1'46.416)**

Lap	Seg.1	Seg.2	Seg.3	Seg.4	Lap Time	km/h	Local Time
1		36.369	33.071	20.071		159,1	
2	23.870	35.951	33.259	21.099	1'54.179	230,3	11:21'18.323
3	22.912	34.592	37.077	19.471	1'54.052	232,3	11:23'12.375
4	23.163	34.346	30.230	<b>18.998</b>	1'46.737	231,8	11:24'59.112
5	22.875	34.251	30.207	19.132	1'46.465	<b>232,8</b>	11:26'45.577

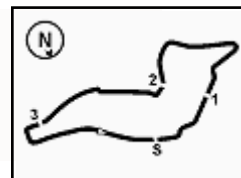
01/06/2024

P = Pits In/Out - C = Lap Time Cancelled

Powered by FICr PERUGIA TIMING







## ACI Racing Weekend Imola, 1-2 Giugno 2024

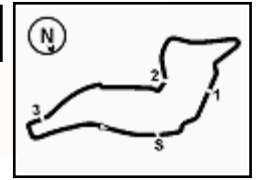
### Italian F4 Championship - Chronological Analysis Qualifying 2

77 E. YEH (1'45.924)							
Lap	Seg.1	Seg.2	Seg.3	Seg.4	Lap Time	km/h	Local Time
1		36.362	31.425	19.494		165,9	
2	23.259	34.674	30.841	20.142	1'48.916	225,5	11:21'18.729
3	24.944	40.299	32.033	19.463	1'56.739	<b>235,3</b>	11:23'15.468
4	22.791	34.255	30.168	19.053	1'46.267	231,3	11:25'01.735
5	22.852	34.065	30.181	18.947	1'46.045	230,8	11:26'47.780
6	22.791	34.176	30.277	18.981	1'46.225	229,3	11:28'34.005
7	22.756	<b>34.051</b>	30.223	<b>18.894</b>	<b>1'45.924</b>	231,3	11:30'19.929
8	<b>22.709</b>	34.089	<b>30.051</b>			230,3	

80 A. POWELL (1'45.195)							
Lap	Seg.1	Seg.2	Seg.3	Seg.4	Lap Time	km/h	Local Time
1		36.655	31.551	19.362		165,1	
2	23.266	35.035	30.809	20.315	1'49.425	230,3	11:21'17.947
3	22.792	34.873	31.151	19.231	1'48.047	<b>234,3</b>	11:23'05.994
4	22.536	33.999	29.949	18.878	1'45.362	230,8	11:24'51.356
5	<b>22.489</b>	<b>33.921</b>	<b>29.894</b>	18.891	<b>1'45.195</b>	230,8	11:26'36.551
6	26.197	37.476	32.051	19.036	1'54.760	229,8	11:28'31.311
7	22.700	34.148	29.936	18.860	1'45.644	227,4	11:30'16.955
8	22.701	33.957	30.117	<b>18.827</b>	1'45.602	228,8	11:32'02.557

88 L. HODENIUS (1'45.744)							
Lap	Seg.1	Seg.2	Seg.3	Seg.4	Lap Time	km/h	Local Time
1		37.931	33.290	19.777		164,4	
2	23.787	36.937	34.069	20.883	1'55.676	227,8	11:22'12.158
3	22.851	34.324	30.411	18.977	1'46.563	229,8	11:23'58.721
4	22.658	34.176	<b>30.073</b>	18.966	1'45.873	230,3	11:25'44.594
5	<b>22.642</b>	34.232	34.406	19.325	1'50.605	<b>230,8</b>	11:27'35.199
6	25.670	39.669	33.314	19.081	1'57.734	<b>230,8</b>	11:29'32.933
7	22.867	34.283	30.464	19.015	1'46.629	229,8	11:31'19.562
8	22.727	<b>34.008</b>	30.111	<b>18.898</b>	<b>1'45.744</b>	229,8	11:33'05.306

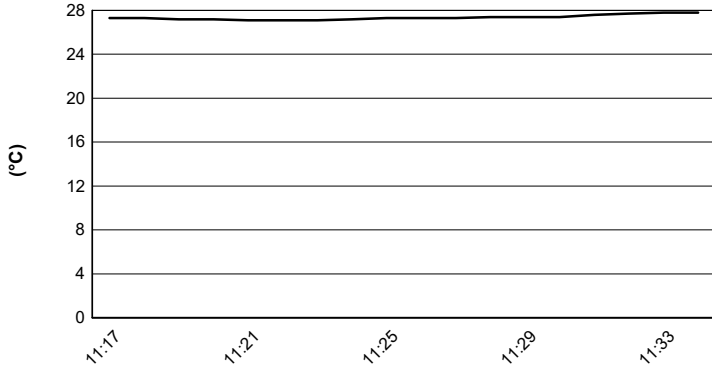




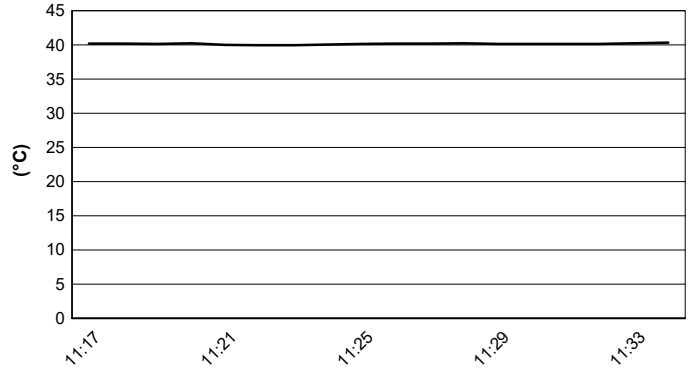
Imola Circuit 4.909 m

**ACI Racing Weekend Imola, 1-2 Giugno 2024**  
**Italian F4 Championship - Weather Report Qualifying 2**  
 Session started 11:17 - Session ended 11:34

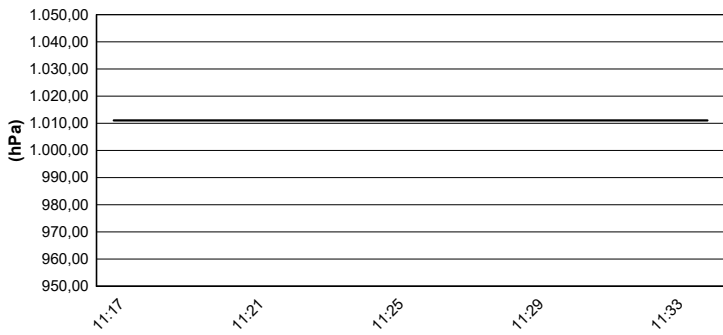
**Air Temperature**



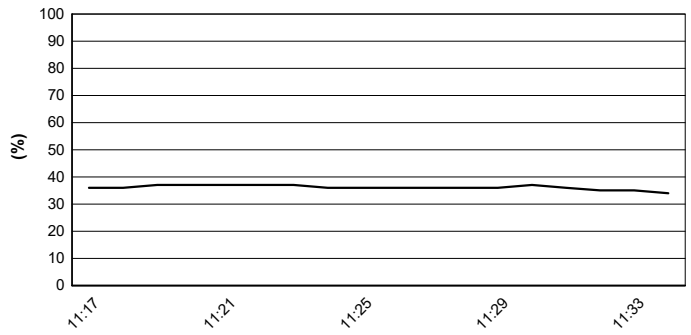
**Track Temperature**



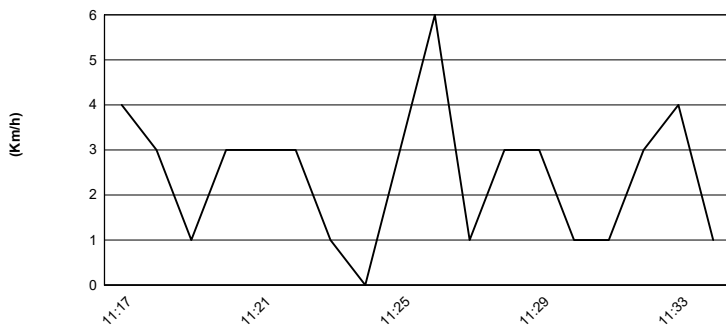
**Air Pressure**



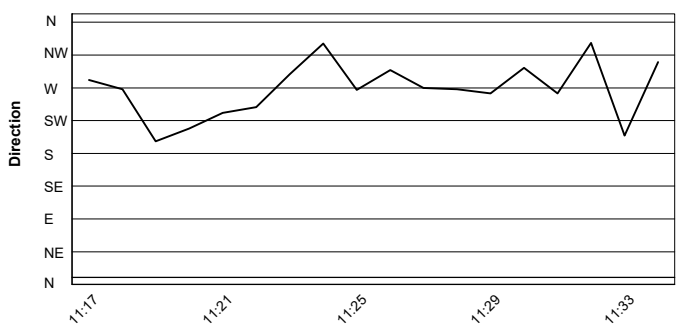
**Humidity**



**Wind Speed**

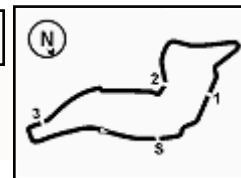


**Wind Direction**



01/06/2024





# ACI Racing Weekend Imola, 1-2 Giugno 2024

## Italian F4 Championship - Results - Second Fastest Lap Qualifying 2

Imola Circuit 4.909 m

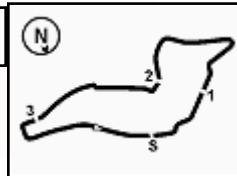
No.	Driver	Nat	Entrant	Team	Car	Class	Time	Gap	Rel.	Laps
1	<b>6 YAMAKOSHI</b> Hiyu	JPN	Van Amersfoort Racing	Van Amersfoort Racing	Tatuus F4-T421		<b>1'45.125</b>			6
2	<b>45 BEETON</b> Jack	AUS	US Racing	US Racing	Tatuus F4-T421		<b>1'45.202</b>	0.077	0.077	7
3	<b>27 SLATER</b> Freddie	GBR	Prema Racing	Prema Racing	Tatuus F4-T421		<b>1'45.219</b>	0.094	0.017	7
4	<b>71 REHM</b> Maxim	DEU	US Racing	US Racing	Tatuus F4-T421	R	<b>1'45.344</b>	0.219	0.125	8
5	<b>51 NAKAMURA-BERTA</b> Kean	JPN	Prema Racing	Prema Racing	Tatuus F4-T421	R	<b>1'45.361</b>	0.236	0.017	8
6	<b>80 POWELL</b> Alex	USA	Prema Racing	Prema Racing	Tatuus F4-T421	R	<b>1'45.362</b>	0.237	0.001	7
7	<b>31 BOHRA</b> Akshay	USA	US Racing	US Racing	Tatuus F4-T421		<b>1'45.378</b>	0.253	0.016	8
8	<b>33 STOLCERMANIS</b> Tomass	LVA	Prema Racing	Prema Racing	Tatuus F4-T421	R	<b>1'45.387</b>	0.262	0.009	7
9	<b>23 FRANCO</b> Reno	NLD	Jenzer Motorsport	Jenzer Motorsport	Tatuus F4-T421		<b>1'45.439</b>	0.314	0.052	8
10	<b>10 FERREIRA</b> Matheus	BRB	US Racing	US Racing	Tatuus F4-T421		<b>1'45.474</b>	0.349	0.035	8
11	<b>14 AL DHAHERI</b> Rashid	UAE	Prema Racing	Prema Racing	Tatuus F4-T421		<b>1'45.483</b>	0.358	0.009	7
12	<b>50 GOWDA</b> Dion	IND	Prema Racing	Prema Racing	Tatuus F4-T421		<b>1'45.485</b>	0.360	0.002	8
13	<b>36 JONSSON</b> Gustav	SWE	Van Amersfoort Racing	Van Amersfoort Racing	Tatuus F4-T421		<b>1'45.560</b>	0.435	0.075	6
14	<b>12 PRADEL</b> Gianmarco	AUS	US Racing	US Racing	Tatuus F4-T421		<b>1'45.588</b>	0.463	0.028	8
15	<b>73 OLIVIERI</b> Emanuele	ITA	AKM Motorsport	AKM Motorsport	Tatuus F4-T421	R	<b>1'45.605</b>	0.480	0.017	8
16	<b>7 SAMMALISTO</b> Luka	FIN	R-ACE GP	R-ACE GP	Tatuus F4-T421	R	<b>1'45.705</b>	0.580	0.100	6
17	<b>3 POPOV</b> Maksimilian	GRD	PHM AIX Racing	PHM AIX Racing	Tatuus F4-T421	R	<b>1'45.767</b>	0.642	0.062	7
18	<b>16 LARINI</b> Davide	ITA	PHM AIX Racing	PHM AIX Racing	Tatuus F4-T421		<b>1'45.783</b>	0.658	0.016	7
19	<b>70 MRAD</b> Kamal	AUS	PHM AIX Racing	PHM AIX Racing	Tatuus F4-T421	R	<b>1'45.840</b>	0.715	0.057	7
20	<b>88 HODENIUS</b> Lin	NLD	Van Amersfoort Racing	Van Amersfoort Racing	Tatuus F4-T421		<b>1'45.873</b>	0.748	0.033	7
21	<b>21 ISCHER</b> Ethan	CHE	Jenzer Motorsport	Jenzer Motorsport	Tatuus F4-T421		<b>1'45.899</b>	0.774	0.026	8
22	<b>8 KOSTIC</b> Andrija	SRB	Van Amersfoort Racing	Van Amersfoort Racing	Tatuus F4-T421	R	<b>1'45.918</b>	0.793	0.019	7
23	<b>49 PETROVIC</b> Andrej	SRB	PHM AIX Racing	PHM AIX Racing	Tatuus F4-T421	R	<b>1'45.960</b>	0.835	0.042	8
24	<b>55 RODELLA</b> Alvisè	ITA	Van Amersfoort Racing	Van Amersfoort Racing	Tatuus F4-T421		<b>1'45.998</b>	0.873	0.038	7
25	<b>77 YEHE</b> Enzo	CHN	R-ACE GP	R-ACE GP	Tatuus F4-T421	R	<b>1'46.045</b>	0.920	0.047	6
26	<b>24 ZHANG</b> Shimo	CHN	Jenzer Motorsport	Jenzer Motorsport	Tatuus F4-T421	R	<b>1'46.267</b>	1.142	0.222	7
27	<b>22 FREY</b> Enea	CHE	Jenzer Motorsport	Jenzer Motorsport	Tatuus F4-T421	R	<b>1'46.361</b>	1.236	0.094	7
28	<b>62 ROBINSON</b> Edward	ESP	AS Motorsport	AS Motorsport	Tatuus F4-T421	R	<b>1'46.408</b>	1.283	0.047	7
29	<b>11 VIISOREANU</b> Luca	ROU	Real Racing	Real Racing	Tatuus F4-T421	R	<b>1'46.421</b>	1.296	0.013	7
30	<b>52 SAVINKOV</b> Oleksandr	UKR	AKM Motorsport	AKM Motorsport	Tatuus F4-T421	R	<b>1'46.441</b>	1.316	0.020	7
31	<b>9 STACK</b> Everett	USA	PHM AIX Racing	PHM AIX Racing	Tatuus F4-T421		<b>1'46.539</b>	1.414	0.098	7
32	<b>20 RYBA</b> Matus	SVK	Jenzer Motorsport	Jenzer Motorsport	Tatuus F4-T421	R	<b>1'46.595</b>	1.470	0.056	8
33	<b>34 MACEDO</b> Francisco	PRT	Cram Motorsport	Cram Motorsport	Tatuus F4-T421	R	<b>1'46.672</b>	1.547	0.077	3
34	<b>18 KOLLER</b> Jan	CZE	BVM Racing	BVM Racing	Tatuus F4-T421	R	<b>1'46.983</b>	1.858	0.311	5
35	<b>5 DOBRZANSKI</b> Wiktor	POL	AKM Motorsport	AKM Motorsport	Tatuus F4-T421		<b>1'47.408</b>	2.283	0.425	7
36	<b>19 ANURAG</b> Kabir	SGP	US Racing	US Racing	Tatuus F4-T421	R				0
37	<b>29 BERREBY</b> Nathanael	CHE	Maffi Racing	Maffi Racing	Tatuus F4-T421	R				0
38	<b>54 HOLGUIN</b> Gabriel	VEN	Maffi Racing	Maffi Racing	Tatuus F4-T421	R				0

Humidity:	36%	AIR	27°C
Condition:	DRY	Track	40°C

Clerk of the Course : Massimiliano Ghinassi

Race Director : Alessandro Ferrari

	Start	End
01/06/2024	11:17	11:34



# ACI Racing Weekend Imola, 1-2 Giugno 2024

## Italian F4 Championship - Best Second Fastest Lap

No.	Driver	Nat	Entrant	Team	Car	Class	Sess. 1	Sess. 2	Time	Gap	Rel.	Laps
1	<b>6 YAMAKOSHI</b> Hiyu	JPN	Van Amersfoort Racing	Van Amersfoort Racing	Tatuus F4-T421		1'45.354	<b>1'45.125</b>	<b>1'45.125</b>			12
2	<b>45 BEETON</b> Jack	AUS	US Racing	US Racing	Tatuus F4-T421		1'45.603	<b>1'45.202</b>	<b>1'45.202</b>	0.077	0.077	14
3	<b>27 SLATER</b> Freddie	GBR	Prema Racing	Prema Racing	Tatuus F4-T421		1'46.195	<b>1'45.219</b>	<b>1'45.219</b>	0.094	0.017	13
4	<b>71 REHM</b> Maxim	DEU	US Racing	US Racing	Tatuus F4-T421	R	1'45.842	<b>1'45.344</b>	<b>1'45.344</b>	0.219	0.125	15
5	<b>51 NAKAMURA-BERTA</b> Kea	JPN	Prema Racing	Prema Racing	Tatuus F4-T421	R	1'45.626	<b>1'45.361</b>	<b>1'45.361</b>	0.236	0.017	14
6	<b>80 POWELL</b> Alex	USA	Prema Racing	Prema Racing	Tatuus F4-T421	R	1'46.032	<b>1'45.362</b>	<b>1'45.362</b>	0.237	0.001	13
7	<b>31 BOHRA</b> Akshay	USA	US Racing	US Racing	Tatuus F4-T421		1'45.573	<b>1'45.378</b>	<b>1'45.378</b>	0.253	0.016	15
8	<b>33 STOLCERMANIS</b> Tomass	LVA	Prema Racing	Prema Racing	Tatuus F4-T421	R	1'46.783	<b>1'45.387</b>	<b>1'45.387</b>	0.262	0.009	13
9	<b>23 FRANCO</b> Reno	NLD	Jenzer Motorsport	Jenzer Motorsport	Tatuus F4-T421		1'45.692	<b>1'45.439</b>	<b>1'45.439</b>	0.314	0.052	14
10	<b>10 FERREIRA</b> Matheus	BRA	US Racing	US Racing	Tatuus F4-T421		1'46.107	<b>1'45.474</b>	<b>1'45.474</b>	0.349	0.035	15
11	<b>14 AL DHAHERI</b> Rashid	UAE	Prema Racing	Prema Racing	Tatuus F4-T421		1'45.810	<b>1'45.483</b>	<b>1'45.483</b>	0.358	0.009	14
12	<b>50 GOWDA</b> Dion	IND	Prema Racing	Prema Racing	Tatuus F4-T421		1'45.709	<b>1'45.485</b>	<b>1'45.485</b>	0.360	0.002	14
13	<b>36 JONSSON</b> Gustav	SWE	Van Amersfoort Racing	Van Amersfoort Racing	Tatuus F4-T421		1'45.934	<b>1'45.560</b>	<b>1'45.560</b>	0.435	0.075	12
14	<b>12 PRADEL</b> Gianmarco	AUS	US Racing	US Racing	Tatuus F4-T421		1'46.284	<b>1'45.588</b>	<b>1'45.588</b>	0.463	0.028	14
15	<b>73 OLIVIERI</b> Emanuele	ITA	AKM Motorsport	AKM Motorsport	Tatuus F4-T421	R	1'46.494	<b>1'45.605</b>	<b>1'45.605</b>	0.480	0.017	15
16	<b>7 SAMMALISTO</b> Luka	FIN	R-ACE GP	R-ACE GP	Tatuus F4-T421	R	1'56.497	<b>1'45.705</b>	<b>1'45.705</b>	0.580	0.100	12
17	<b>3 POPOV</b> Maksimilian	GRD	PHM AIX Racing	PHM AIX Racing	Tatuus F4-T421	R	1'46.646	<b>1'45.767</b>	<b>1'45.767</b>	0.642	0.062	14
18	<b>16 LARINI</b> Davide	ITA	PHM AIX Racing	PHM AIX Racing	Tatuus F4-T421		1'46.606	<b>1'45.783</b>	<b>1'45.783</b>	0.658	0.016	14
19	<b>70 MRAD</b> Kamal	AUS	PHM AIX Racing	PHM AIX Racing	Tatuus F4-T421	R	1'46.394	<b>1'45.840</b>	<b>1'45.840</b>	0.715	0.057	14
20	<b>88 HODENIUS</b> Lin	NLD	Van Amersfoort Racing	Van Amersfoort Racing	Tatuus F4-T421		1'46.577	<b>1'45.873</b>	<b>1'45.873</b>	0.748	0.033	13
21	<b>21 ISCHER</b> Ethan	CHE	Jenzer Motorsport	Jenzer Motorsport	Tatuus F4-T421		1'46.117	<b>1'45.899</b>	<b>1'45.899</b>	0.774	0.026	15
22	<b>8 KOSTIC</b> Andrija	SRB	Van Amersfoort Racing	Van Amersfoort Racing	Tatuus F4-T421	R	1'46.987	<b>1'45.918</b>	<b>1'45.918</b>	0.793	0.019	13
23	<b>49 PETROVIC</b> Andrej	SRB	PHM AIX Racing	PHM AIX Racing	Tatuus F4-T421	R	1'46.189	<b>1'45.960</b>	<b>1'45.960</b>	0.835	0.042	15
24	<b>55 RODELLA</b> Alvise	ITA	Van Amersfoort Racing	Van Amersfoort Racing	Tatuus F4-T421		1'46.193	<b>1'45.998</b>	<b>1'45.998</b>	0.873	0.038	13
25	<b>77 YEH</b> Enzo	CHN	R-ACE GP	R-ACE GP	Tatuus F4-T421	R	1'56.024	<b>1'46.045</b>	<b>1'46.045</b>	0.920	0.047	11
26	<b>24 ZHANG</b> Shimo	CHN	Jenzer Motorsport	Jenzer Motorsport	Tatuus F4-T421	R	1'46.480	<b>1'46.267</b>	<b>1'46.267</b>	1.142	0.222	12
27	<b>22 FREY</b> Enea	CHE	Jenzer Motorsport	Jenzer Motorsport	Tatuus F4-T421	R	1'46.526	<b>1'46.361</b>	<b>1'46.361</b>	1.236	0.094	14
28	<b>19 ANURAG</b> Kabir	SGP	US Racing	US Racing	Tatuus F4-T421	R	<b>1'46.401</b>	<b>1'46.401</b>	<b>1'46.401</b>	1.276	0.040	6
29	<b>62 ROBINSON</b> Edward	ESP	AS Motorsport	AS Motorsport	Tatuus F4-T421	R	1'47.085	<b>1'46.408</b>	<b>1'46.408</b>	1.283	0.007	13
30	<b>11 VIISOREANU</b> Luca	ROU	Real Racing	Real Racing	Tatuus F4-T421	R	1'46.911	<b>1'46.421</b>	<b>1'46.421</b>	1.296	0.013	13
31	<b>52 SAVINKOV</b> Oleksandr	UKR	AKM Motorsport	AKM Motorsport	Tatuus F4-T421	R	1'55.032	<b>1'46.441</b>	<b>1'46.441</b>	1.316	0.020	12
32	<b>9 STACK</b> Everett	USA	PHM AIX Racing	PHM AIX Racing	Tatuus F4-T421		1'47.159	<b>1'46.539</b>	<b>1'46.539</b>	1.414	0.098	14
33	<b>20 RYBA</b> Matus	SVK	Jenzer Motorsport	Jenzer Motorsport	Tatuus F4-T421	R	1'46.764	<b>1'46.595</b>	<b>1'46.595</b>	1.470	0.056	15
34	<b>34 MACEDO</b> Francisco	PRT	Cram Motorsport	Cram Motorsport	Tatuus F4-T421	R	1'47.315	<b>1'46.672</b>	<b>1'46.672</b>	1.547	0.077	9
35	<b>18 KOLLER</b> Jan	CZE	BVM Racing	BVM Racing	Tatuus F4-T421	R	1'47.585	<b>1'46.983</b>	<b>1'46.983</b>	1.858	0.311	11
36	<b>5 DOBRZANSKI</b> Wiktor	POL	AKM Motorsport	AKM Motorsport	Tatuus F4-T421		1'55.924	<b>1'47.408</b>	<b>1'47.408</b>	2.283	0.425	13
37	<b>29 BERREBY</b> Nathanael	CHE	Maffi Racing	Maffi Racing	Tatuus F4-T421	R	<b>1'50.192</b>	<b>1'50.192</b>	<b>1'50.192</b>	5.067	2.784	6
38	<b>54 HOLGUIN</b> Gabriel	VEN	Maffi Racing	Maffi Racing	Tatuus F4-T421	R						1

Clerk of the Course : Massimiliano Ghinassi

Race Director : Alessandro Ferrari

01/06/2024

Powered by FICr PERUGIA TIMING

